

MFA INSTRUCTIONS FOR EXTERNALS USERS SECURITY KEY

The ResumID project is in full swing to deliver a more secure, efficient, and fast Identity and Access Management (IAM) solution. We have reached a point where we need active participation from our employees and affiliates to implement an additional security feature – MFA.

A good number of Volvo Group users use MFA already, but to increase the security of the identities of our users, a registration of an MFA method will be necessary.

The purpose of this document is to help our users with this transition by providing a step-by-step guide to enable MFA using security key for user accounts.

SETUP SECURITY KEY FOR MULTI-FACTOR AUTHENTICATION



Important Notes on Security Key Setup:

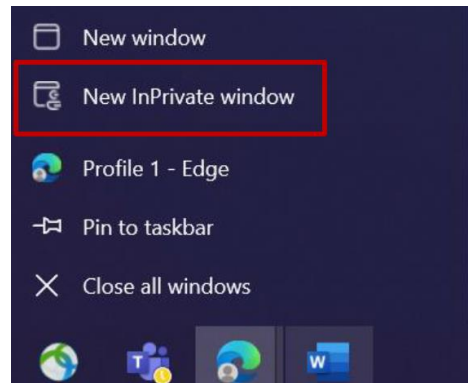
A Security Key device is required for Multi-Factor Authentication (MFA)

A secondary MFA method (SMS, Phone Call, Authenticator App) is required before setting up Security Key

1. Log into your system and close all browser windows.

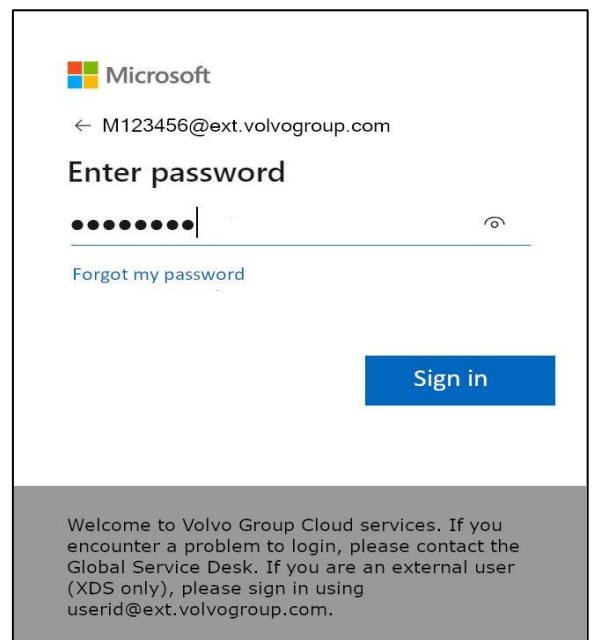
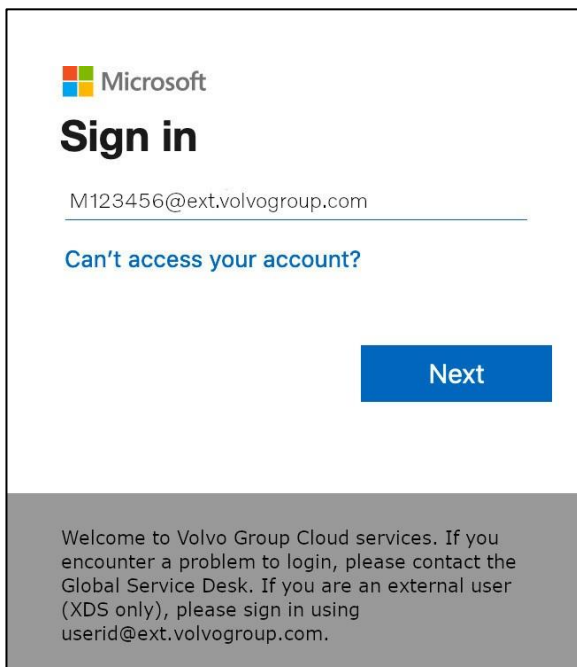
For Win: Open a new InPrivate Incognito browser session with right-click on the Edge browser icon and select “New InPrivate Window”

For MAC: Open your Edge or Chrome browser; Press Command/Cmd and shift and then press the N key



2. In the address field of the browser enter the URL: <https://myaccount.microsoft.com>

Enter your User ID plus the extension “@ext.volvogroup.com” and click on “Next”

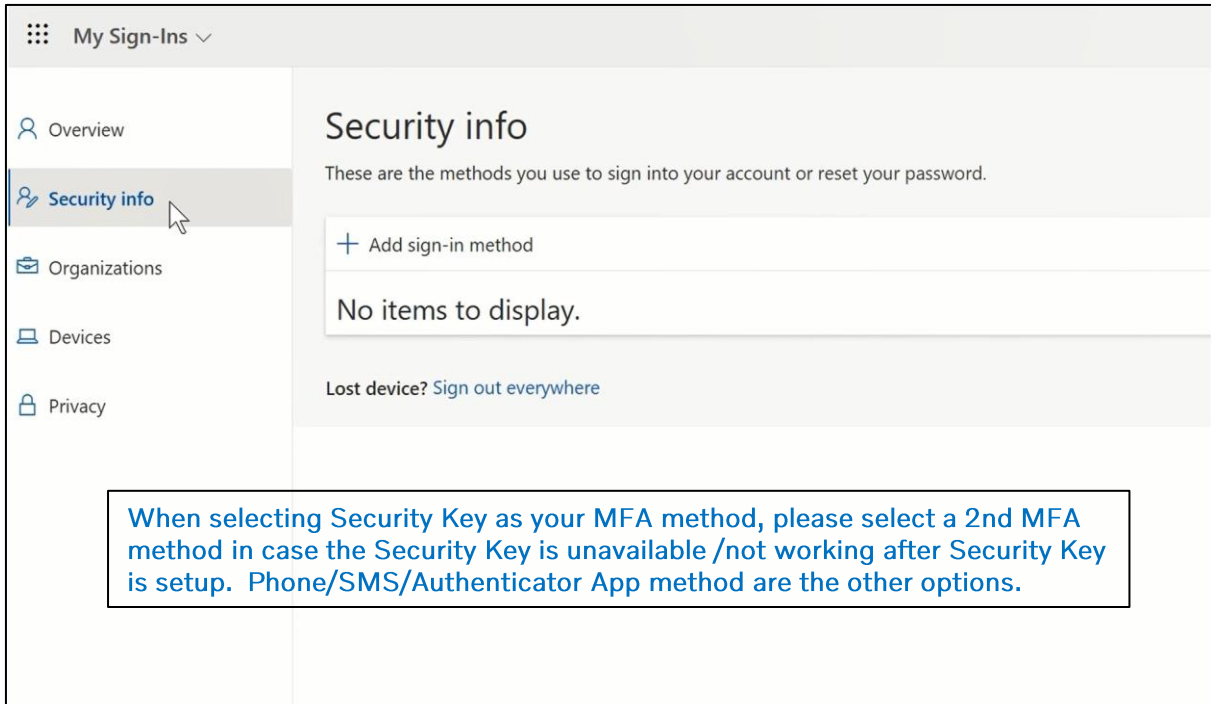


3. Enter the password by using the same password you use for our portals (example: Trucks Dealer Portal, Trucks Customer Portal) or Tech Tool.

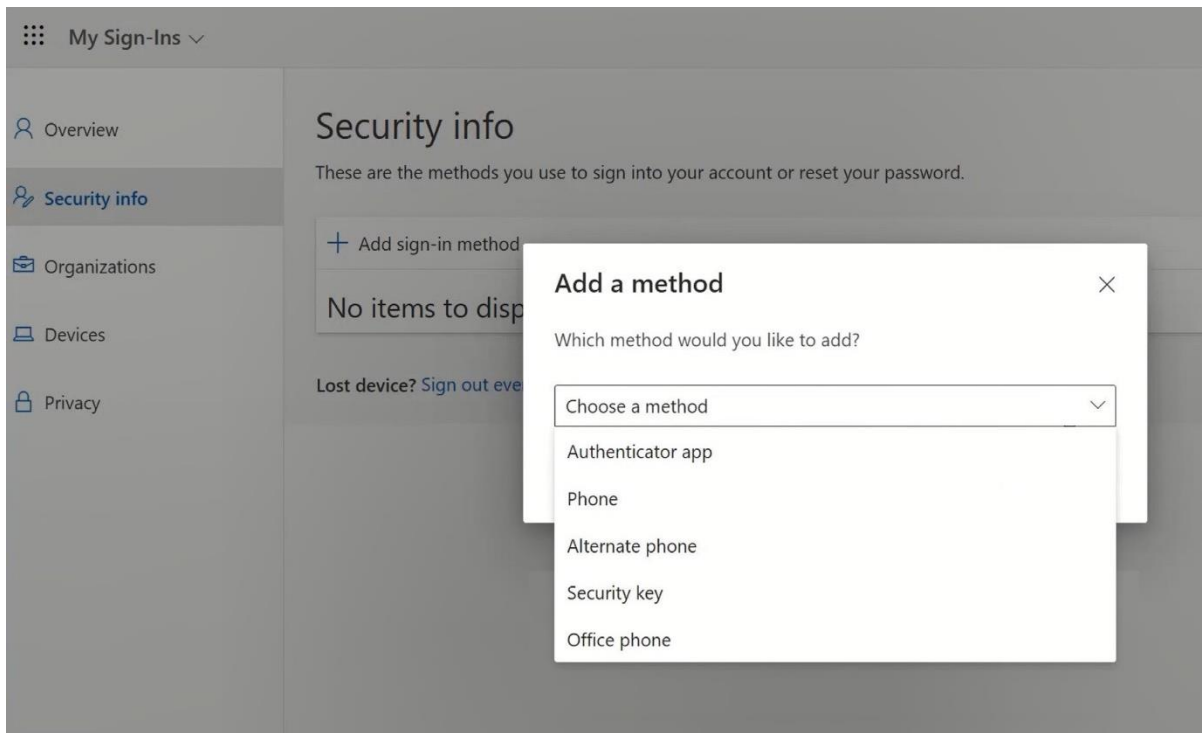
4. Click “Sign in”

You will be forwarded to Microsoft’s Security Info page

5. On the next page, click on “+ Add sign-in method”



6. In the pop-up, expand the dropdown-menu “Choose a method” and select “Security Key” as your MFA method.



Security Key Hardware Examples

To select a **FIDO2** compatible security key, please visit [Microsoft website for compatible keys](#) for additional Microsoft recommendations.

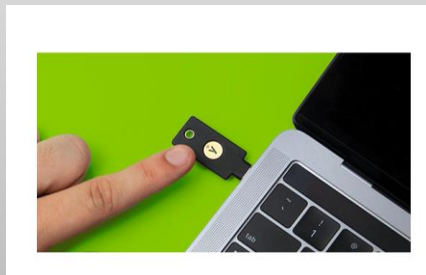


The Yubico branded security key has been tested and meets compatibility standards at Volvo, however, other FIDO2 Keys may be registered for use.

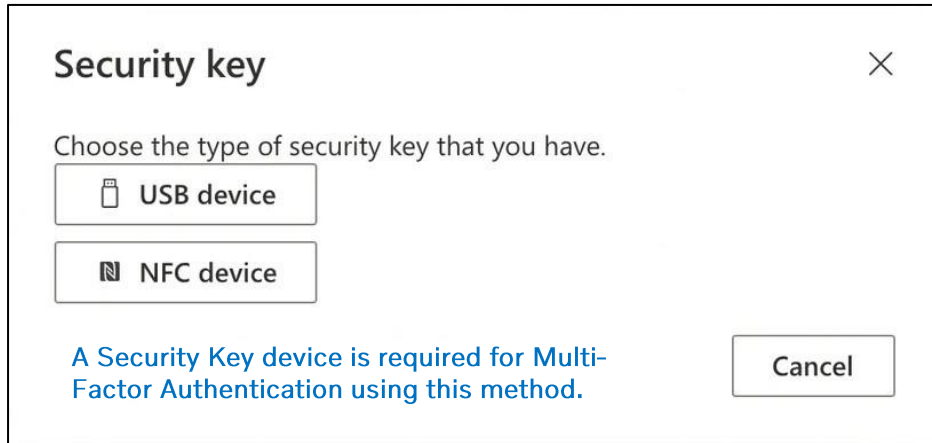
For additional information on Security Keys, please visit:

<https://www.yubico.com/products/yubikey-5-overview/>

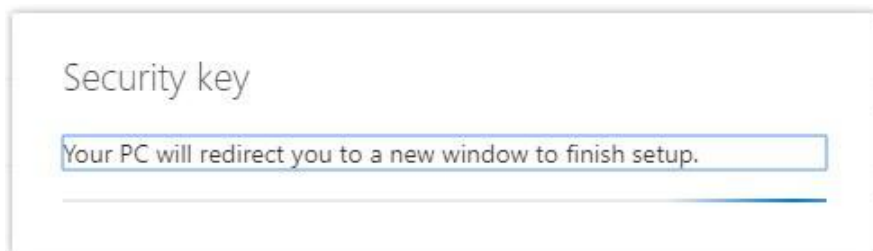
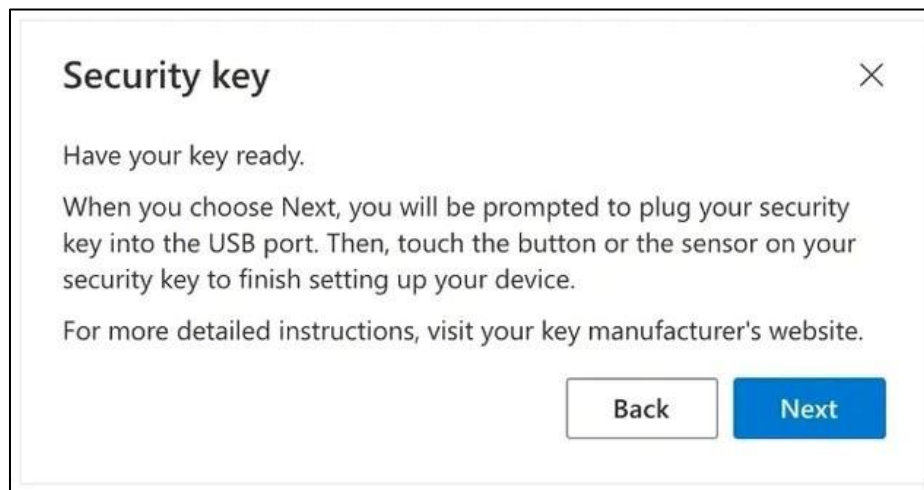
[Where can I buy YubiKeys?](#)



7. In the pop-up, click on "USB device"

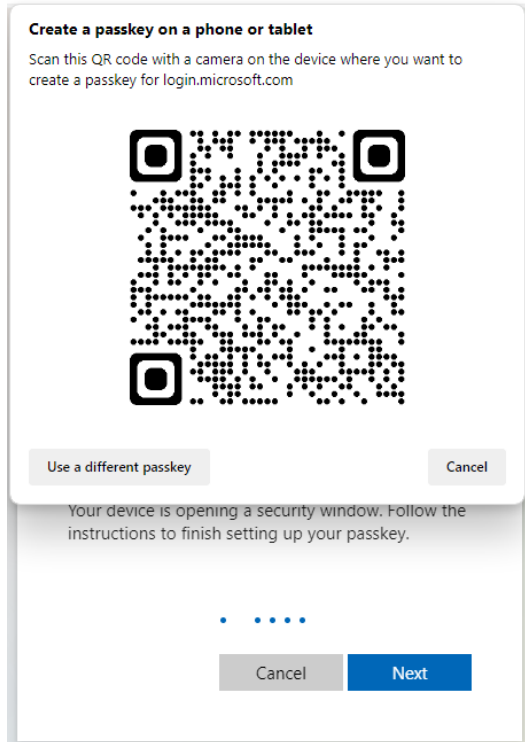


8. Read the disclaimer and click "Next"

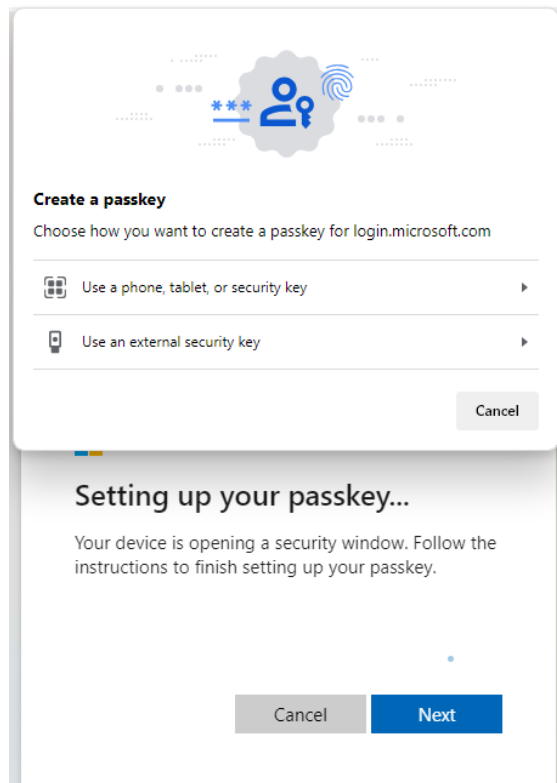


You will be redirected to a dialogue of "Windows Security" to set up your security key

9. Click on “Use a different passkey” in the new window



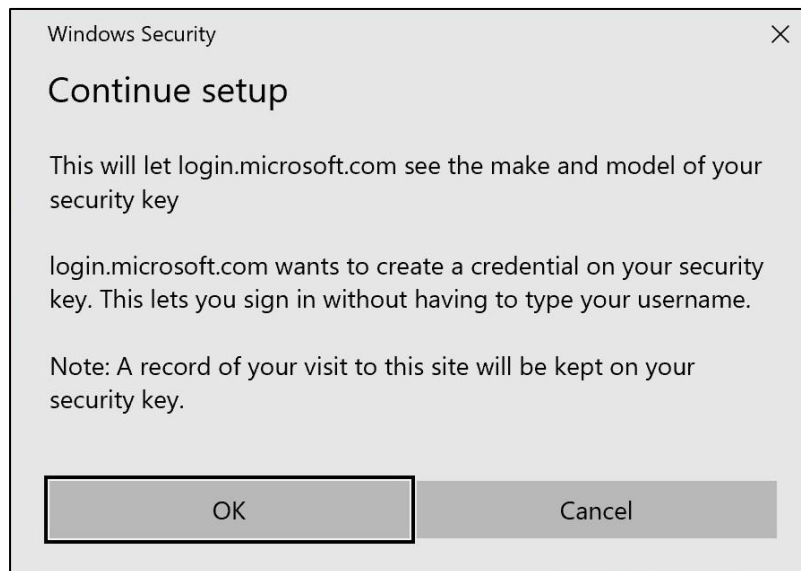
10. Click “Use external security key” in the new window



11. Click on "OK" to continue



12. Click "OK" to continue



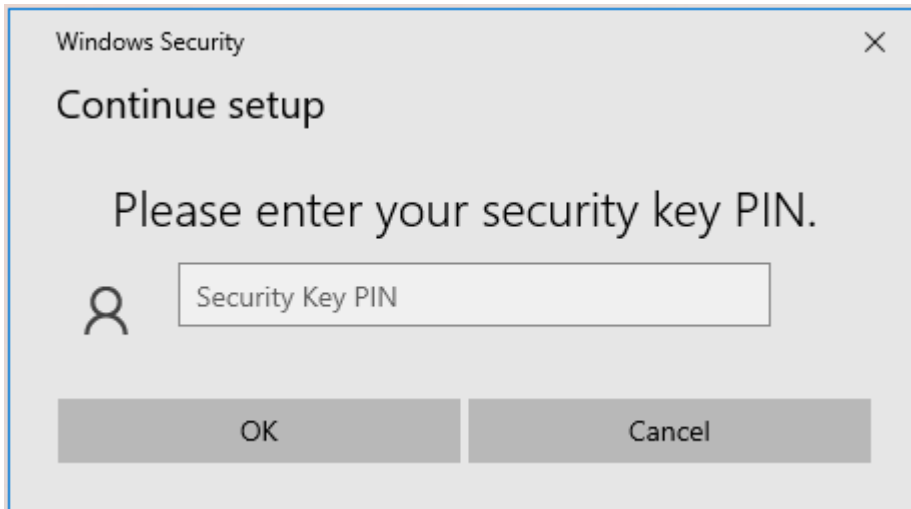
13. Click "OK" to continue



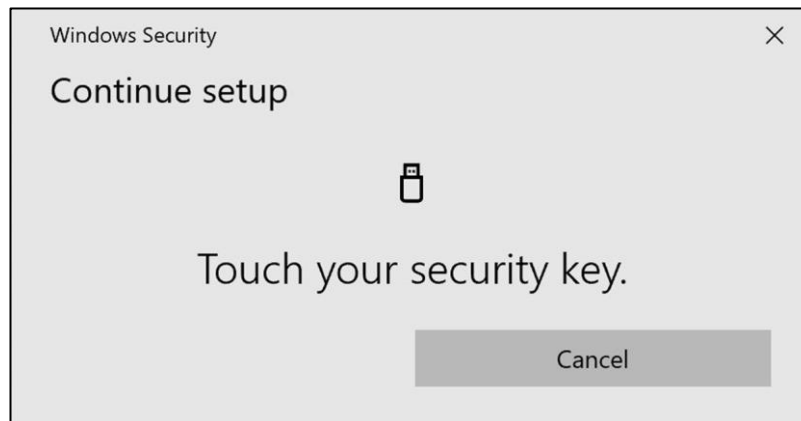
V O L V O

14. Enter a PIN to personalize your security key

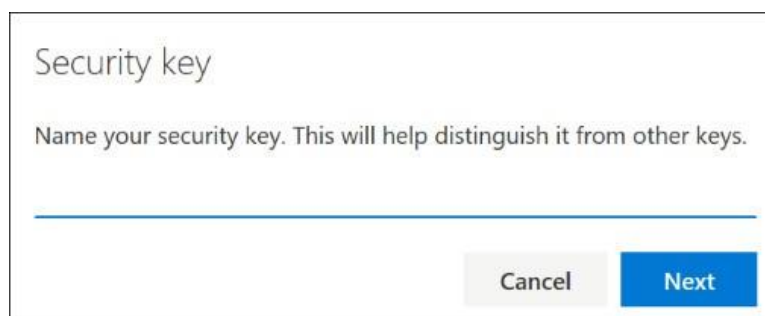
Enter your PIN again to confirm, then click on “OK”



15. Touch your security key again to continue



16. Enter a name for your security key in the next window and click on “Next”

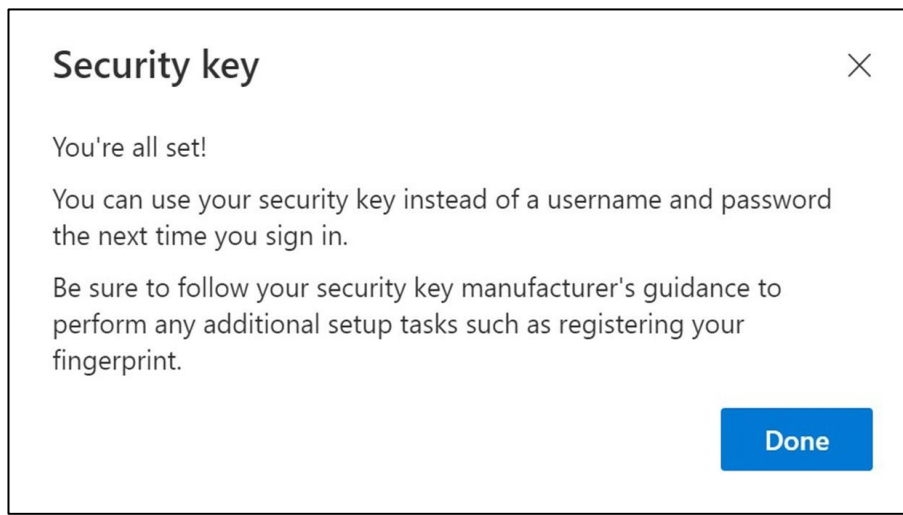


17. Click on “Done”

Your security key is now set up

You can see your new MFA method “Security Key” in the list on your “Security Info” page

You have enabled MFA by “Security Key” to your user account



Two MFA Methods should be selected for each user to minimize support required to access Volvo Applications