

SETUP ADAPTER INSTRUCTIONS



Premium Tech Tool

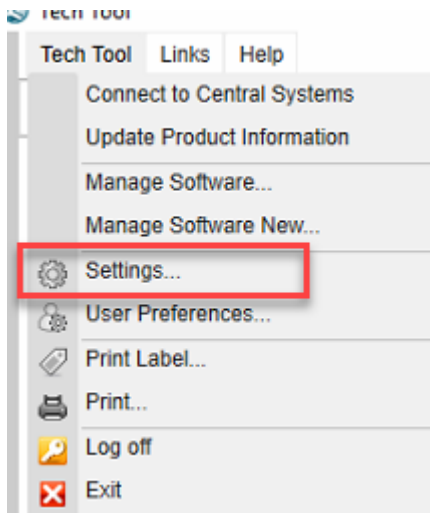
1. Tech Tool settings

In **Settings** you are able to configure the Communication Unit.

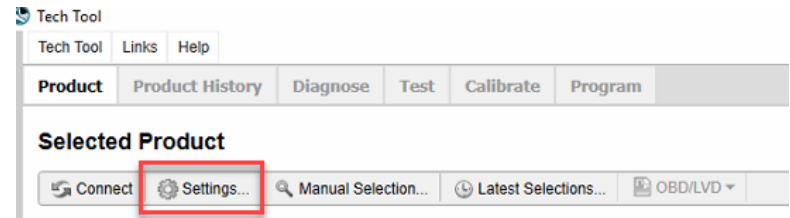
- **Communication unit**

To start setting up your communication unit access **Settings** on the **Tech Tool** menu or through the shortcut in the toolbar under the **Product** tab.

Tech Tool Menu

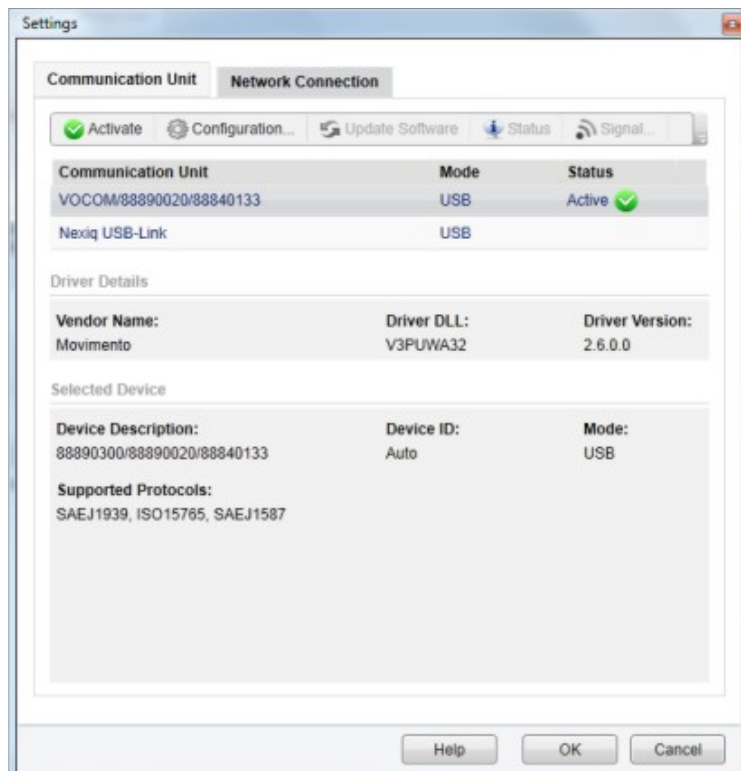


Tech Tool Toolbar



2. Communication Unit settings

In this tab you can select which **Communication Unit** should be active. It is possible to have several communication units configured on the same computer.



SETUP ADAPTER INSTRUCTIONS

Communication Unit settings [CONT.]

By default Vocom/88890020/88840133 is always installed and ready to be used in USB mode.

In the list you will also see any RP1210 A/B/C compliant driver that you have installed on your machine.

Please Note: Although Tech Tool will list any RP1210 compliant driver, only the following communication units are officially supported by Tech Tool:

- Nexiq USB Link (USB and Bluetooth)
- Nexiq USB Link 2
- Noregon JPRO DLA+
- Noregon JPRO DLA+PLC
- Noregon JPRO DLA+Wireless (USB and WLAN)
- Dearborn DPA 5 (only USB, Dual or Quad device)
- Dearborn DPA 4 Plus

Note: DPA 4 Plus does not support newer vehicles (OBD2013 and OBD2014)

- XscapeEz EZ Tap

Note: EZ Tap does not support newer vehicles (OBD2013 and OBD2014)

3. Activate

This option will activate the selected communication unit to be used by Tech Tool. This means that Tech Tool will look for the activated communication unit only.

Select to highlight the communication unit (adapter) to setup. Click the "Activate" button. The "Status" column for the selected adapter will display "Active" with a green check indicating your adapter is setup.



Note: If you connect a communication unit other than the currently activated one, Tech Tool will not recognize it until you activate it.

Click "OK" to save and exit the **Settings** window.