



Premium | TechTool™

VOCOM II TOUGH WLAN SETUP

This document shows how to set up VOCOM II in wireless mode.

Before you start, make sure of the following:

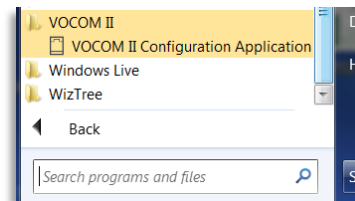
- You have an internet connection.
- You are connected to the computer using USB cable.
- You are connected to the vehicle using 9pin or 16 pin cable.
- You have done basic setup (updated firmware and confirmed the VOCOM II (USB) works with Tech Tool).



VOCOM II Tough Part# 88894000

Please follow these steps to set up VOCOM II

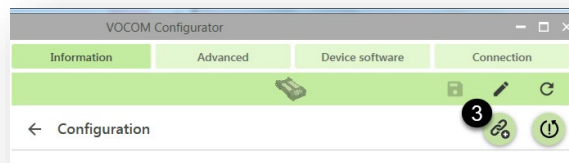
1. Close Tech Tool.
2. Launch the VOCOM II Configuration Application (*Located under the START menu*).



3. The VOCOM II must be Paired to the computer it is used with (this can only be done over USB).
 - a. To Pair, Under the Information¹ tab. Click on the Edit² button in the Menu bar.



- b. On the Configuration page, click on the Pair³ button.

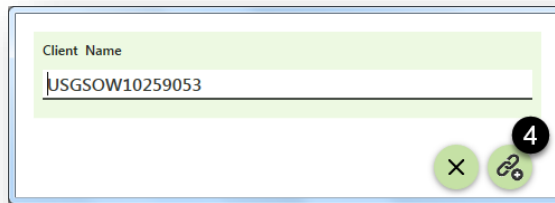




Premium | TechTool™

VOCOM II TOUGH WLAN SETUP

- c. For the Client Name the Name of the Computer (suggestion: use the ClientID) is set by default. Click on the Pair⁴ button to save.



4. Configure the Wireless Settings.

- a. To configure, click the Connection⁵ tab in the Menu bar. *NOTE: Two WLAN configuration Modes available (WLAN Infrastructure and WLAN Direct).*



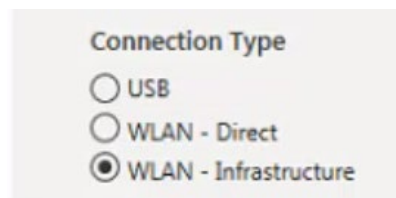
- i. **WLAN Infrastructure Mode** is normally used in a workshop environment where there is already an existing infrastructure network.



- ii. **WLAN Direct Mode** is used when the laptop needs to be directly connected to a Vocom II device via WLAN, e.g., when using it in the field without the existence of an infrastructure network.



- b. Select a Connection Type – (*Preferred type WLAN Infrastructure*)





Premium | TechTool™

VOCOM II TOUGH WLAN SETUP

c. Set Network Settings according to your Network. (If necessary, Contact your IT Administrator for information).

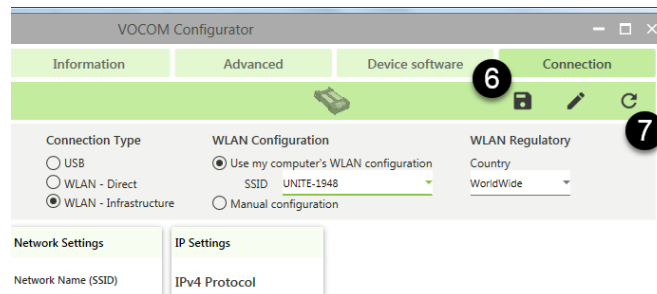
- i. Network Name (SSID)
- ii. Encryption
- iii. Authentication
- iv. Password

d. Use Manual Configuration for Advanced Network Settings only.

- i. Host Identifier
- ii. DNS Server
- iii. IPV4 & IPV6 Protocol

The image shows two screenshots of the VOCOM II configuration interface. The left screenshot displays the 'Network Settings' section, which includes fields for 'Network Name (SSID)', 'Encryption' (set to WPA2), 'Authentication' (set to WPA-PSK), 'User Name', and 'Password'. The right screenshot displays the 'WLAN Configuration' and 'IP Settings' sections. The 'WLAN Configuration' section has radio buttons for 'Use my computer's WLAN configuration' and 'Manual configuration' (selected), and a 'WLAN Regulatory' dropdown set to 'WorldWide'. The 'IP Settings' section has checkboxes for 'Activate Factory Wirele' and 'Host Identifier', and dropdowns for 'IPv4 Protocol' and 'IPv6 Protocol' (both set to DHCP). Other settings include 'WLAN Roaming Threshold' (20 dB), 'Frequency Band' (2.4 GHz and 5 GHz checked), and 'DNS Server'.

5. After configuring the VOCOM II WLAN configurations, save⁶ and reboot⁷ the device.



6. Disconnect the VOCOM II USB from the pc. *NOTE: The battery symbol indicator should shine green. The WLAN indicator should shine blue. The WLAN signal strength indicators should be lit. If you instead see the antenna symbol blinking blue, it means the VOCOM II could not connect to your network. Connect via USB and check that all the settings are correct.*

7. You should now see the VOCOM II in the Configuration Application again (allow a few seconds). *NOTE: If the device does not appear on*

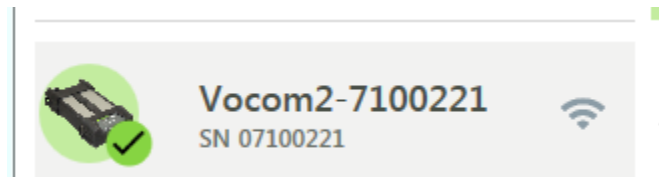


Premium | TechTool™

VOCOM II TOUGH WLAN SETUP

the Configuration Application it means that your Host Identifier and/or DNS Server settings are incorrect, connect via USB and confirm the settings.

8. Double-click the VOCOM II symbol. You will see a small check mark on the VOCOM II device display.



9. VOCOM II Wireless Setup Complete! Login to Tech Tool, if necessary; activate the VOCOM II (WLAN) adapter found under Settings.